

ISLE OF ANGLESEY COUNTY COUNCIL	
Report to:	The Executive
Date:	8 th September, 2014
Subject:	Regional and Local Arrangements to Safeguard Children and Adults.
Portfolio Holder(s):	Councillor Ken Huws
Head of Service:	Anwen Huws
Report Author: Tel: E-mail:	Anwen Huws 01248 751811 AnwenMHughes@anglesey.gov.uk
Local Members:	Not relevant in this case

A –Recommendation/s and reason/s
<p>The Executive approves the proposed structure for the regional Safeguarding Children’s Boards known as the North Wales Safeguarding Children Board, as shown in this report.</p> <p>The Executive notes that the Social Services & Wellbeing Bill proposes putting safeguarding adults on to a similar statutory footing as that for children, including the requirements for Adult Safeguarding Board.</p> <p>Reasons</p> <p>Clearly the risk that we fail to safeguard is paramount and is sighted in the corporate risk register and service risk register. It is essential we seek solutions that ensure we deliver the most secure and suitable safeguarding services to the authority’s children and families. We must also recognize the strength regional agenda particularly working alongside our regional partners such as the Police and Health who also have clear responsibilities to protect and safeguard children. It is our view that this is the best arrangement to ensure that the council is well prepared to support the requirements to protect and safeguard children. It is our view that this is the best arrangement to ensure that the council is well prepared to support the requirement of the Social Services and Wellbeing Act, and to also develop a North Wales best fit solution, based on evidence of what works in relation to Safeguarding. The</p>

recommendations are aligned to our corporate priorities.

- Safeguarding children supports our corporate priority for an Anglesey where people are healthy and safe.
- The Local Safeguarding Children Board is a statutory requirement and contributes to the delivery of the council's responsibilities for vulnerable children.

B – What other options did you consider and why did you reject them and/or opt for this option?

Local Safeguarding Children Boards are statutory partnerships, which co-ordinate and ensure the effectiveness of partners safeguarding activities (Children's Act 2004). Regulations further expand on the functions of an LSCB, and specify membership of the board. The Social Services & Wellbeing Bill proposes putting safeguarding adults on to a similar statutory footing as that for children, including the requirements for Adult Safeguarding Boards. The Social Services & Wellbeing Act also requires agencies to establish regional safeguarding boards. The regions are defined according to the Local Health Board foot print: North Wales is the defined region for our area.

Quo Three Sub Regional Boards - This option is not the preferred option going forward. As it will not meet the requirements of the Social Services & Well Bill. Three sub-regional Safeguarding Childrens Boards have been in place for some time across North Wales: Gwynedd & Mon LSCB, Conwy & Denbighshire LSCB, and Flint & Wrexham LSCB. Following announcements from Welsh Government in the autumn of 2011, the three sub-regional LSCB's have taken steps to promote greater integration and collaboration, and to move towards a regional structure, ahead of the forthcoming Social Services & wellbeing Act.

A two - tier system – This option is not the preferred option. A two tier system of Safeguarding Boards has been in place across North Wales since early 2013. A Regional Board was established, but the statutory functions remained with the three sub-regional LSCBs. The two tier system has had success, but there have been tensions. A regional approach has been adopted throughout most of the other regions across Wales, although many have proceeded to regional boards in their totality and have ceased to convene local boards. The two tier model and the fully

regional model have both been evaluated by Sheffield University and a detailed report is available on request.

A Regional Board with local delivery groups – Preferred Option.

In response to the lessons learned from the operation of the two tier system, it is now proposed that a structure is put in place which maintains a strong local presence whilst also resolving the tensions between the regional and local boards. It is proposed that statutory functions will rest with the North Wales Safeguarding Children Board (NWSCB), and the sub regional groups will ensure that local practice meets local model. The North Wales regional SCB used the findings of the ADSSW/MLGA evaluation study and Independent Safeguarding Panel's report to inform discussion and decision making at its development day on 4th April 2014.

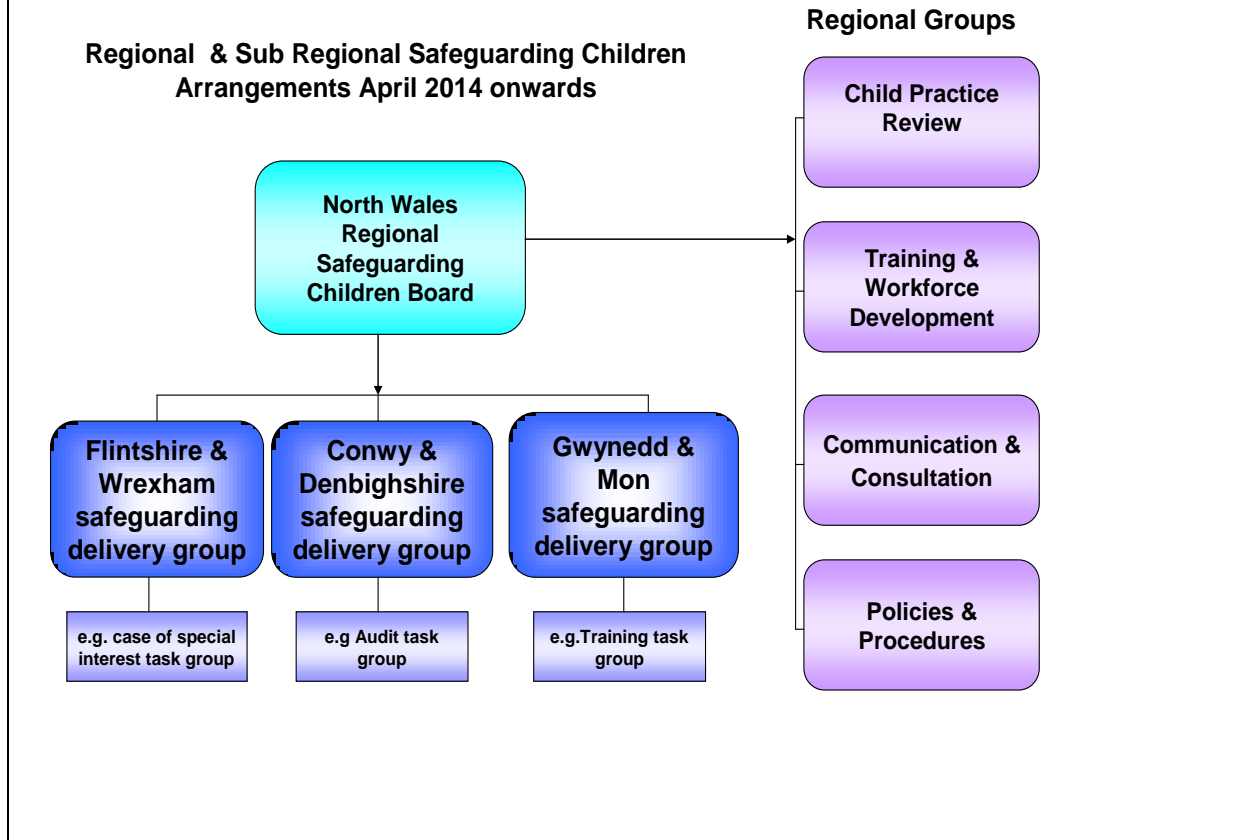
The regional SCB recognised that there was a need to reduce the duplication of roles, responsibilities and representation at regional and sub-regional levels, whilst maintaining mechanisms to deliver regional direction and engage professionals at a local level. Draft revised structures were developed at the development session, and were then formally considered and agreed at the regional SCB meeting on 8th April 2014. The proposed revised structure places responsibility and accountability with the regional board, and replaces the sub regional LSCBs with local safeguarding delivery groups. Representation will be at the level directed in statute on the Regional SCB, and at Head of Service/ operational manager level on the local delivery group. The proposed amended local structure is shown in Diagram below.

The revised structure addresses the concerns initially identified:

- Local needs, culture and language are supported via the local safeguarding delivery groups;
- Statutory Directors of Social Services can continue to report to Elected Members in local Authority Areas;
- Local and Regional structures will be supported by representatives at different levels, reducing the pressures on very senior representatives
- The regional Board will be able to make decisions and promote swifter progress.
-

The lessons learnt from the Safeguarding Children Board pilot can now be applied to the development of regional and sub-regional structures for safeguarding adults.

Proposed Sub Regional Structure April 2014 onwards.



C – Why is this decision for the Executive?

In accordance with Financial Procedure rule 4.8.6.4.1 The Executive is responsible for approving delegations, including frameworks for partnership. Therefore approval is required from the Executive to enter in to regional arrangements for the delivery of statutory requirements for safeguarding boards.

D – Is this decision consistent with policy approved by the full Council?

The decision required is not contrary to any policy within the remit of the full Council.

DD – Is this decision within the budget approved by the Council?

Yes

E – Who did you consult?		What did they say?
1	Chief Executive / Strategic Leadership Team (SLT) (mandatory)	Supported the report.
2	Finance / Section 151 (mandatory)	
3	Legal / Monitoring Officer (mandatory)	
5	Human Resources (HR)	N/A
6	Property	N/A
7	Information Communication Technology (ICT)	N/A
8	Scrutiny	Presented for Scrutiny on the 24.07.14. The Scrutiny Committee supported the proposal and wished it noted that the proposal did not undermine or change in any way the Local Authority's statutory responsibilities for safeguarding.
9	Local Members	N/A
10	Any external bodies / other/s	N/A

F – Risks and any mitigation (if relevant)		
1	Economic	N/A
2	Anti-poverty	N/A
3	Crime and Disorder	N/A
4	Environmental	N/A
5	Equalities	Will provide a service that is statutory complaint for some of the most vulnerable children.
6	Outcome Agreements	N/a
7	Other	

FF - Appendices:

G - Background papers (please contact the author of the Report for any further information):
Report to Scrutiny on the 24 th July, 2014.

